



SIENNA DECORATIVE OPEN GAS FIRE

Models:

KGF260-002	KGF260-005
KGF260-003	KGF260-006
KGF260-004	KGF260-007



Installation, Servicing and Operation Manual

INSTALLER: These instructions must be left with the owner.

Caution: FOR YOUR SAFETY

This Decorative Open Gas Fire is designed and approved for insertion into an existing masonry fireplace and chimney, wall cavity or false chimney provided that the installation procedures in these instructions are followed precisely.

Failure to follow the installation instructions correctly may lead to over-temperature conditions arising which may lead to damage and or loss to house and property.

- The appliance is not intended for use by young children or infirm persons without supervision.
- Young children should be supervised to ensure that they do not play with the appliance.
- The appliance must not be located directly under a power socket-outlet.
- Do not place clothing or other flammable material on or near the appliance. Keep curtains, clothes, drapes, furniture and other such material at least 900mm away from the appliance.
- Never attempt to burn paper or any other material in the flames.

IMPORTANT

If you smell gas:

- 1. Turn off the main gas supply.**
- 2. Extinguish any open flame.**
- 3. Open a window.**
- 4. DO NOT operate electrical switches.**
- 5. Immediately call the gas supplier from a safe location.**

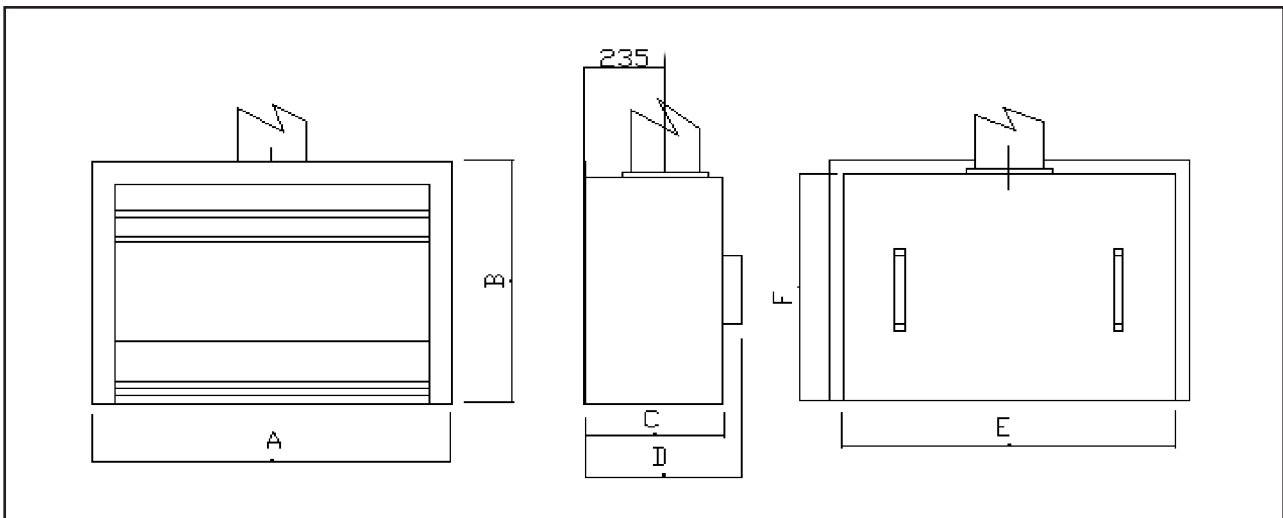
THE APPLIANCE SHALL BE INSPECTED BEFORE USE, AND AT LEAST ONCE A YEAR BY AN AUTHORISED PERSON. MORE FREQUENT INSPECTION AND CLEANING MAY BE NECESSARY IF THERE IS EXCESSIVE LINT PRESENT FROM BEDDING, CARPETING ETC. IT IS IMPERATIVE THAT CONTROL COMPARTMENTS, BURNERS AND CIRCULATING AIR PASSAGEWAYS OF THE APPLIANCE ARE KEPT CLEAN.

WARNING: IMPROPER INSTALLATION, ADJUSTMENT, ALTERATION, SERVICING OR MAINTENANCE CAN CAUSE INJURY OR PROPERTY DAMAGE. REFER TO THIS MANUAL FOR ASSISTANCE, OR FOR ADDITIONAL INFORMATION, CONSULT YOUR DEALER OR GAS SUPPLIER.

READ THIS MANUAL BEFORE INSTALLING AND USING THE APPLIANCE.

SPECIFICATIONS

Model	Gas Type	Burner Pressure	Gas Consumption
KGF260-002	NG	1.00 kPa	30.5 MJ/h
KGF260-003	LPG	2.00 kPa	30.5 MJ/h
KGF260-004	NG	1.00 kPa	35 MJ/h
KGF260-005	LPG	2.00 kPa	35 MJ/h
KGF260-006	NG	0.80 kPa	40 MJ/h
KGF260-007	LPG	2.00 kPa	40 MJ/h



* Note that this drawing and dimensions do not include the fascia trim.

Model	A	B	C	D	E	F	Flue Dia
KGF260-002 KGF260-003	825	685	400	460	760	665	150
KGF260-004 KGF260-005	925	685	400	460	860	665	200
KGF260-006 KGF260-007	1025	685	400	460	960	665	200

Note: Add 20mm to E for width of opening in wall cavity.
Add 15mm to F for height of opening in wall cavity.
Add 60mm to C for depth of wall cavity.

Important:

- Maintain clearance of at least 200mm between the sides of the fireplace and any combustible material extending forward of the fascia, e.g. mantle supports.
- A minimum distance of at least 1000mm shall be maintained between the front of the fireplace and any building structure or other substantial immovable object in front of the fireplace.

INSTALLATION

NOTE THAT GAS CONNECTION AND FLUEING OF THIS INSERT MUST BE MADE BY AN AUTHORISED PERSON, AND MUST COMPLY WITH THE REQUIREMENTS OF THE GAS ACT AND GAS REGULATIONS, AND THE GAS APPLIANCE INSTALLATION CODE NZS 5261:2003.

Installation General Points:

The insert must have a 300mm wide non-combustible hearth fitted in front of it. This hearth must extend at least the full width of the insert and fascia trim.

A gas supply pipe must be run to the left hand rear corner of the insert (looking from the front). This should be sufficiently large for delivery of up to 70MJ/h of Natural Gas at 2 kPa nom. pressure. 15mm (1/2") copper is recommended. We suggest that the connection to the appliance inlet be made with an approved flexible hose assembly, sufficiently long to allow sliding the insert in and out of the fireplace when installing and servicing. Ensure the hose is long enough so that the appliance can be removed from the fireplace without putting a strain on the hose. (Ref 2.6.2.15 of NZS 5261.)

An earthed power outlet socket must be provided adjacent to the appliance to allow connection of the power cord. A power supply switch must be located external to the wall cavity to enable isolation of the fire when installation and service work is carried out.

At all times the fireplace is in use, 40,000 sq. mm of effective ventilation shall be provided into the room in which the fireplace is installed. This is the equivalent of a 750mm wide window opened by 55mm.

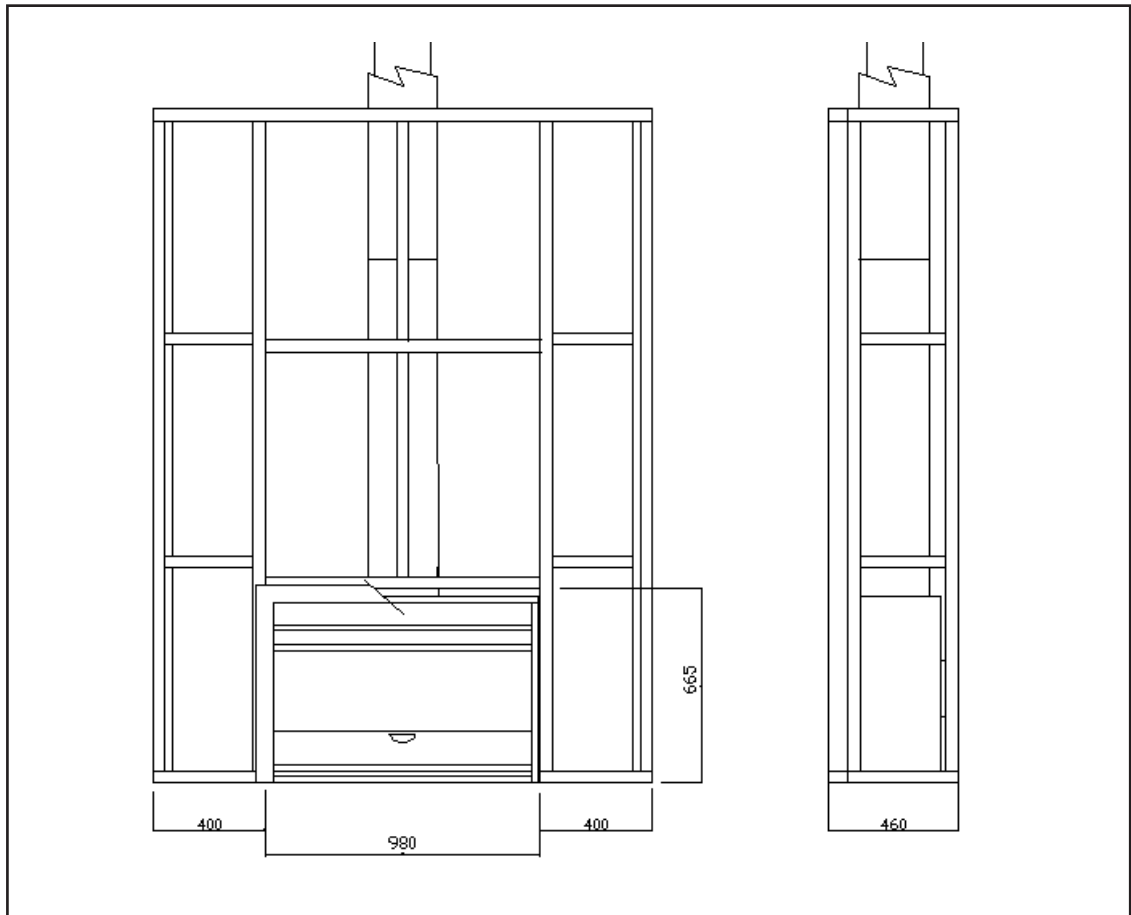
Installation into a wall cavity or false chimney:

The insert may be installed into a wall cavity or false chimney. This shall be constructed generally as shown in the accompanying drawing, of 75 x 50mm nominal sized timber, and gib-board. There must be an air gap of 10mm at either side of the insert, and 15mm at the top of the insert, between the outside of the steel casing and the timber framing of the cavity. The timber shall not touch the casing at any point. Two spacers are fitted to the back of the casing. These ensure the correct amount of room is maintained at the back of the cavity for protection of the gas hose/regulator and power cord. DO NOT remove these spacers.

The cavity in which the insert is installed must be ventilated to prevent any long term build up of heat. This may be either vented to the outside of the house or into the room in which the appliance is installed. The area of the vents should be approximately 250mm x 50mm and there should be one installed near floor level and a second near ceiling level.

A continuous stainless steel flue pipe must be fitted to the insert and this flue must extend to at least the minimum height specified in the Gas Appliance Installation Code NZS 5261:2003. The flue must be shielded by an outer casing extending from the top of the insert casing to the cowl above the roof. The outer casing shall be kept a minimum of 10mm from combustible surfaces. An approved cowl must be fitted to the top of the flue to prevent entry of rainwater, debris and birds, etc.

The flange behind the fascia trim must be drilled so that the insert can be fixed into position to prevent movement in case of earthquake.



Note: The fascia is not shown in these views. The flange on the front of the insert is partially shown in the front view. The 980mm dimension given for the opening is for 900mm model only.

Installation into an existing fireplace/chimney:

This insert may be installed into an existing masonry fireplace and chimney if it is sound and in good condition, and is large enough for the model selected. The fireplace and chimney must be inspected first for holes or cracks. Any such holes must be filled with a suitable sealant, including any gaps under or around the insert, once fitted. The chimney must be swept clean, and any debris removed completely.

The size of the opening must be checked to ensure that the space is big enough to accommodate the insert. Some bricks may need to be removed to allow fitting. If this is the case, check that the structural integrity of the fireplace and chimney is not compromised. If it is impractical to increase the opening by removing bricks, it may be necessary to consider a smaller model in the range.

The flange behind the fascia trim must be drilled so that the insert can be fixed into position to prevent movement in case of earthquake.

A cowl must be fitted to the top of the chimney. It is not permitted to install the appliance without placing a suitable approved cowl and flashing on top of the masonry chimney.

Gas Connection and Adjustment:

Once the gas pipe has been connected, it will be necessary to check the gas circuit for soundness and for correct operating pressure.

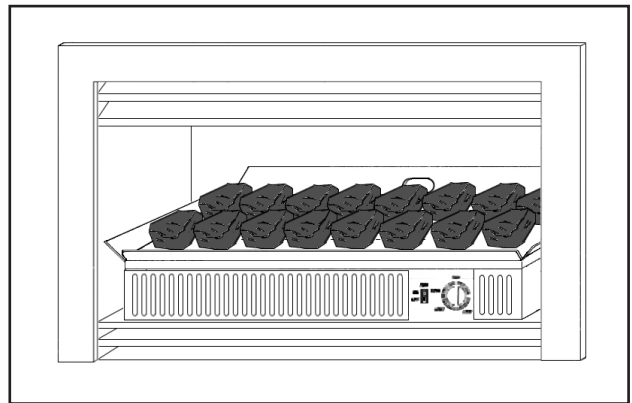
- The pressure is measured at HIGH rate at the test point on the burner injector fitting, accessed by removing the large front cover panel under the burner.
- The correct operating pressures are given in the Specification Table on page 3.
- Adjust the regulator setting if required to achieve the correct pressure.

Once the insert is plumbed in and connected to the power supply and the pressure has been correctly set, the fascia panel may be attached to the casing using the magnets included.

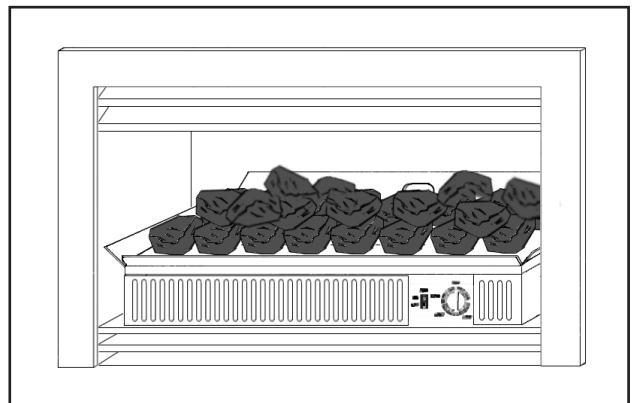
Assembly of the burner:

The insert is factory assembled, but it is necessary to place the coals onto the burner pan before use.

- Place the front row of coals approximately 25mm apart.
- Place the rear rows approximately 10mm apart.



- The remaining coals should be placed on top of the rear and middle rows. Some may be rested on the front row.
- Make sure that it is possible to see the pilot flame in the opening in the middle of the back of the burner.
- It is important that the coals are spaced apart in order to allow the radiant heat to escape.



Once the fireplace is lit and in use, some re-arrangement of the coals may prove necessary to maximise both appearance and performance of the fireplace.

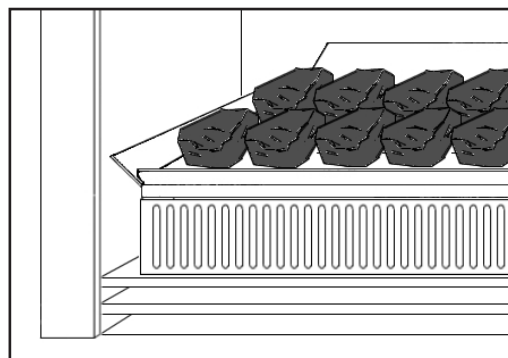
OPERATION

Lighting Procedure:

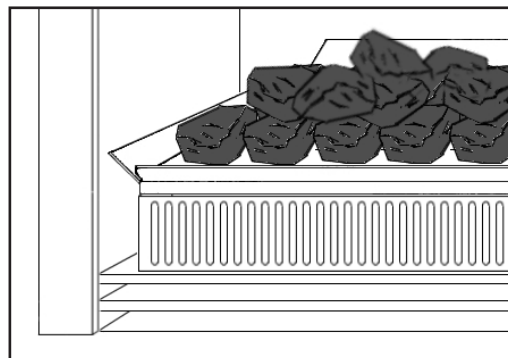
1. Push in the control knob and turn anti-clockwise to the pilot position. The ignition unit should spark as this is done.

Check if the pilot light has ignited. If not, repeat step one.

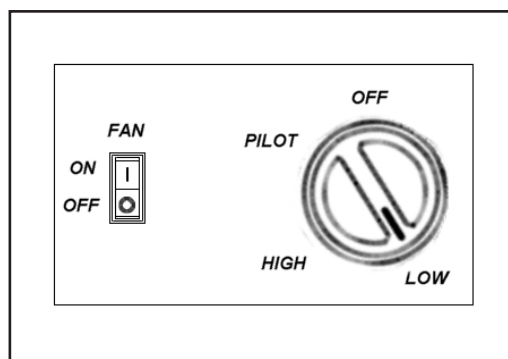
Once the pilot has lit, continue to hold in the control knob for approximately 20 seconds. If the pilot fails to light after 2 or 3 attempts, turn the control knob to OFF and wait 5 minutes for unburnt gas to escape before trying again.



2. To turn on the main burner, turn the control knob to the HIGH position. Always run the fireplace on HIGH for the first 10 minutes to warm up the fire and chimney and allow the chimney to draw properly.

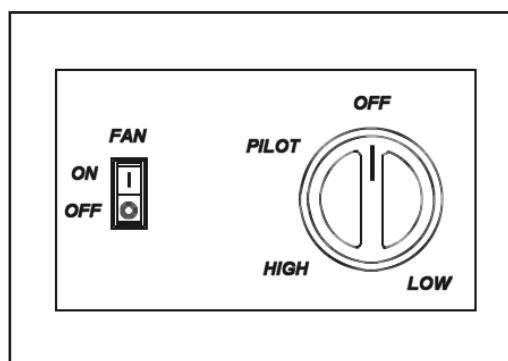


3. To turn down the fireplace, turn the knob fully anti-clockwise.



To turn the fireplace off:

Turn the control knob to the PILOT position, then push in and turn clockwise to OFF.



Fan Operation:

The fan has one speed, and is operated by a manual switch adjacent to the control knob. The switch has an OFF position in the centre, and ON above OFF. For most situations, the fan will ensure ample circulation of heated air throughout the room.



Drawing	Part No	Description
1	FE190-001	Dec Fire inlet gas pipe - 700
	FE190-002	Dec Fire inlet gas pipe - 800/900
2	FE190-005	Dec Fire Maxitrol regulator LPG
	FE190-006	Dec Fire Maxitrol regulator NG
3	FE190-008	Dec Fire manual control valve
4	FE190-011	Dec Fire pilot gas pipe - mod 700
	FE190-012	Dec Fire pilot gas pipe - mod 800/900
5	FE190-013	Dec Fire pilot assembly - jetted for lpg
	FE190-014	Dec Fire pilot assembly - jetted for ng
6	FE190-015	Dec Fire electrode
7	FE190-016	Dec Fire t-couple 600mm long
8	FE190-019	Dec Fire burner gas pipe - mod 700
	FE190-020	Dec Fire burner gas pipe - mod 800/900
9	FE190-021	Dec Fire tee piece 3/8" compression
10	FE190-022	Dec Fire tee pipe - mod 800/900
11	FE190-023	Dec Fire orifice/test point tee fitting
	FE190-024	Dec Fire 5mm id test point o-ring
	FE190-025	Dec Fire test point screw M5 x 8 pan
12	FE190-026	Dec Fire orifice elbow
		Injectors
13	FE190-027	Dec Fire injector LPG B - 7 hole @ 0.65mm
	FE190-028	Dec Fire injector LPG B - 7 hole @ 0.50mm
	FE190-029	Dec Fire injector LPG B - 7 hole @ 0.55mm
	FE190-030	Dec Fire injector NG B - 7 hole @ 0.95mm
	FE190-031	Dec Fire injector NG B - 7 hole @ 0.75mm
	FE190-032	Dec Fire injector NG B - 7 hole @ 0.85mm
14	FE190-033	Dec Fire aeration sleeve
		Electrical Components
	FE190-034	Dec Fire mains cordset
	FE190-036	Dec Fire wiring loom - 2 piece
	FE190-037	Dec Fire P clip 20-PUC06A
	FE190-038	Dec Fire cord clamp 21-MP6N4B
	FE190-039	Dec Fire grommet
15	FE190-040	Dec Fire SPDT center off switch
16	FE190-041	Dec Fire 60 x 300 fan
	FE190-042	Dec Fire 60 x 420 fan
		Coals
	FE190-047	Dec Fire bagged set of 36 coals
	FE190-048	Dec Fire bagged set of 42 coals
	FE190-049	Dec Fire bagged set of 48 coals
	FE190-050	Dec Fire instruction book
	FE190-051	Dec Fire dataplate label



GUIDE TO DURATION OF WARRANTY

1. Appliances will be free from defects in material and workmanship under normal use and service when installed and used in accordance with all applicable local laws and regulations.
2. If, during the warranty period, a product fails to operate properly due to defects in workmanship or materials, Aber will either, at its option, repair or replace the product without charge to the purchaser.

The following circumstances or events are either deemed to be outside the scope of the general warranty policy as set out above, or will invalidate any warranty claim:

- Normal customer maintenance, including yearly maintenance, routine maintenance, lubrication, etc.
- Installation of the products or removal of products from the original purchaser's home; or product failure or problems caused by removal or improper or faulty installation of the product in or from the original purchaser's home.
- Damage caused by the continued use of a product after a fault has occurred.
- Accident, Act of God, nature or war, theft, abuse, misuse, negligence or neglect, including improper installation.
- Failure to operate or maintain the product in accordance with the owner's manual furnished with the product.
- Any alterations or modifications, including those affecting the product's performance, operation, safety, durability or changes in its intended use.
- Additional damage to parts or components due to consented use occurring after any of the above conditions.
- Incorrect installation or commissioning. Problems of this nature must be reported to the installer for their action. Installers must adhere to the installation instructions as per Aber and the Manufacturer's product installation manuals and comply with the latest version of NZS 5261.
- Gas appliances not installed by an approved, licensed Gasfitter. Installation by unqualified persons will invalidate the warranty.
- 'Electrical Fix Wiring' to the appliance must be installed by a qualified / Licensed Electrician.
- The warranty applies only to the goods supplied and does not cover any other damage incurred.

No agent, representative, dealer or employee of Aber or any other person has the authority to increase or alter the obligations of Aber under these warranties.

Proper Maintenance and Operation

The original purchaser must exhibit reasonable care in the maintenance and operation of the product as explained in the maintenance section of the owner/operator's manual. When in doubt, the Retailer should be contacted by the original purchaser for advice.



WARRANTY CLAIM PROCEDURES

Should a failure in product occur, the product should not be used and an authorised Aber Dealer should be contacted for service. The following steps will need to be taken:

The original purchaser will be required to furnish proof of purchase to an Authorised Aber Service Agent in order to obtain warranty service. The original selling Dealer should be utilised for this purpose. Proof of purchase must include the date purchased, model number, serial number and complete name and address of the selling Dealer.

Please Note: When travel to remote locations is required exceeding 35 km or 45 minutes, the additional distance traveled will be chargeable to the customer by the Service Agent.

The following will apply to all products from date of purchase by the original consumer for use in a normal, domestic situation.

Products used for business purposes will carry a 30 day warranty

Flame Effect Fires	a) Gas controls, gas burners, ceramic logs	2 year
	b) Heat exchanger	5 year

For full warranty terms & conditions please refer to our website: www.kent.co.nz

Distributed by:
Aber,
P O Box 10095, Te Rapa, Hamilton
Ph: 0800 161 161 Fax: 0800 163 163
email: sales@aber.co.nz.
www.kent.co.nz

