



NZ's Coldest Temperatures

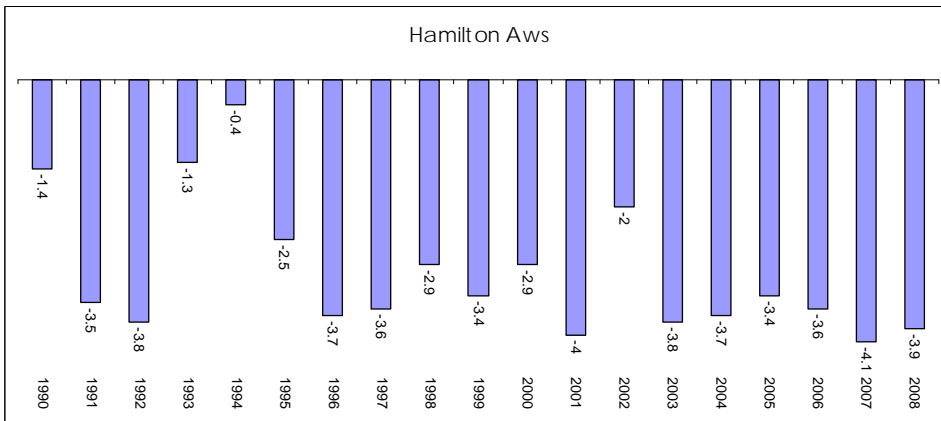
No need to buy an expensive heat pump to work at minus 15°C.

Kent Bio-Filter Heat Pumps operate right down to minus 15°C ambient (outdoor temperature). This is more than adequate to maintain efficient operation as the coldest temperature recorded in New Zealand since 1979 was in Waiouru at minus 10.5°C back in 1994.

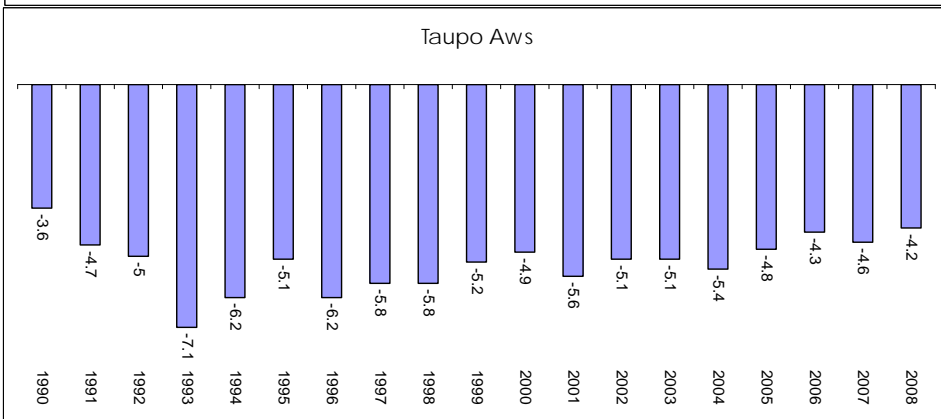
There is no need to spend extra money on other brands of heat pumps that cost more to work harder at low temperatures, these expensive designs are simply not necessary. The coldest regions in New Zealand typically have average temperatures of between minus 4 and 7 °C.

The following graphs show the actual recorded minimum air temperatures in regions that record the lowest temperatures. The data was supplied via the NIWA public access website.

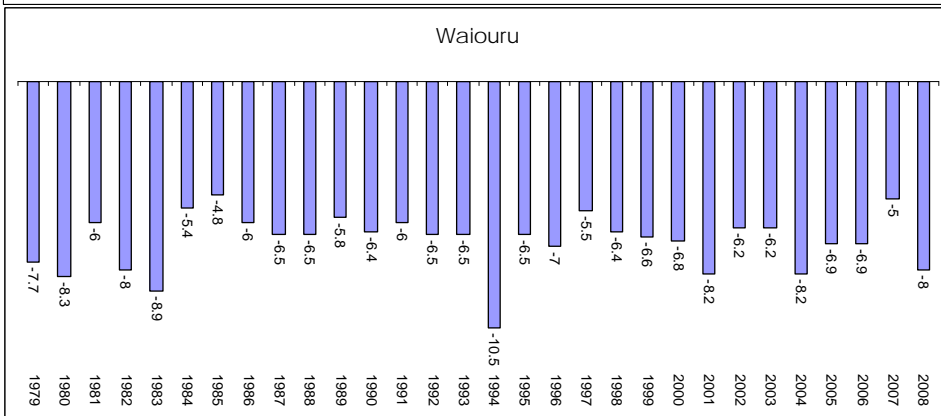
The coldest recorded temperature in the North Island since 1979 was in Waiouru at minus 10.5°C and in the South Island in Invercargill at minus 9°C. Auckland's coldest recorded temperature is only minus 1.6°C.



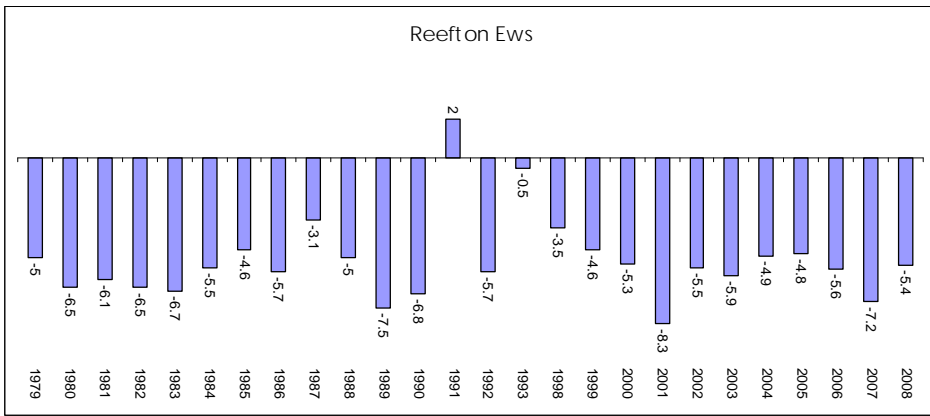
Coldest recorded temperature in Hamilton between 1990 and 2008 was minus 4.1°C



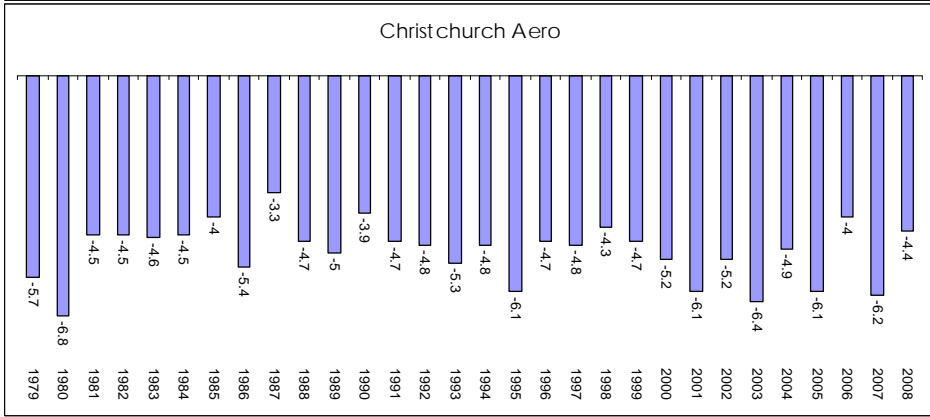
Coldest recorded temperature in Taupo between 1990 and 2008 was minus 7.1°C



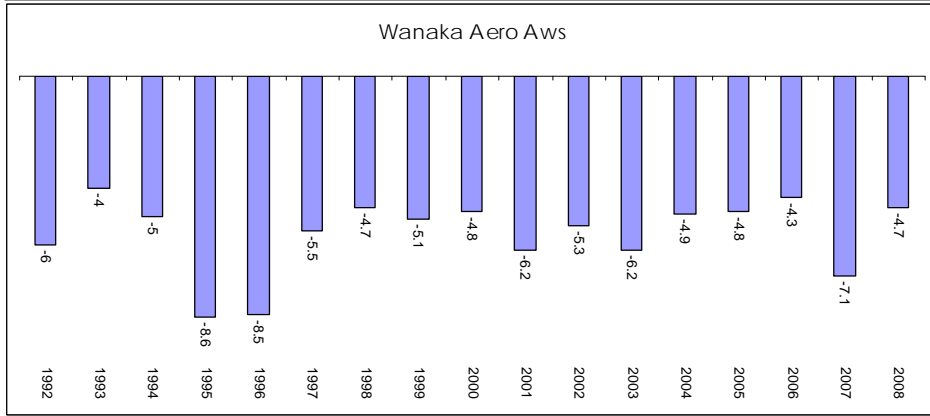
Coldest recorded temperature in Waiouru between 1979 and 2008 was minus 10.5°C



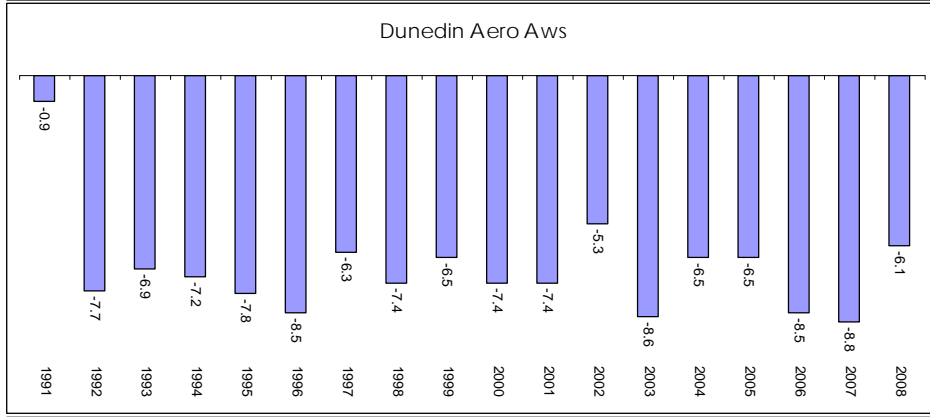
Coldest recorded temperature in Reefton between 1979 and 2008 was minus 8.3°C



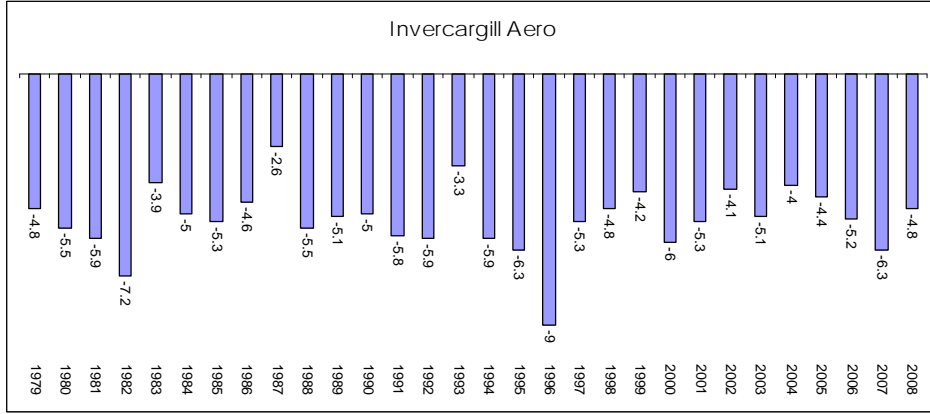
Coldest recorded temperature in Christchurch between 1979 and 2008 was minus 6.8°C



Coldest recorded temperature in Wanaka between 1992 and 2008 was minus 8.6°C



Coldest recorded temperature in Dunedin between 1991 and 2008 was minus 8.8°C



Coldest recorded temperature in Invercargill between 1979 and 2008 was minus 9°C